

THE BRIARWOOD BY RIEDMAN HOMES

This cozy home has 2,374 sq. ft. of living space, including 3 bedrooms, 2.5 baths, and so much more. The open floor plan features a spacious kitchen adjoining the great room and dining room. The flex room on the first floor is ideal for a home office, an additional living room, or anything else you can think of. Upstairs, the master suite features a private bath and walk-in closet. For added convenience, The Briarwood has a huge mudroom right off the garage, and a laundry room on the second floor. And there are also covered front and rear porches. Options for this home include a third garage, an additional master suite on the first floor, and an alternate master bath layout.

RIEDMAN
HOMES

45 EAST AVENUE

ROCHESTER, NY 14604

585-232-1000

RIEDMANHOMES.COM



Illustrations are artist's concepts. Actual colors may vary. Builder reserves the right to modify floor plans, elevations, colors and materials without notice. ©2021 Riedman Homes. – ALL RIGHTS RESERVED. All dimensions and features are approximate and are subject to field variation and/or change without notice. If any discrepancy arises between these plans and the architect's plans, the architect's plans shall prevail.



COTTAGE ELEVATION

THE BRIARWOOD

OUTSTANDING FEATURES

- 2-story Single-family
- 2,374 Square Feet
- 3 Bedrooms
- 2.5 Baths
- 2-car Garage

FREQUENTLY REQUESTED OPTIONS

- Carriage-style Garage Door with Windows
- Railings on Front Porch
- 3-car Garage
- 2nd Master Suite on First Floor

Covered Front & Rear Porch



TRADITIONAL ELEVATION



CRAFTSMAN ELEVATION

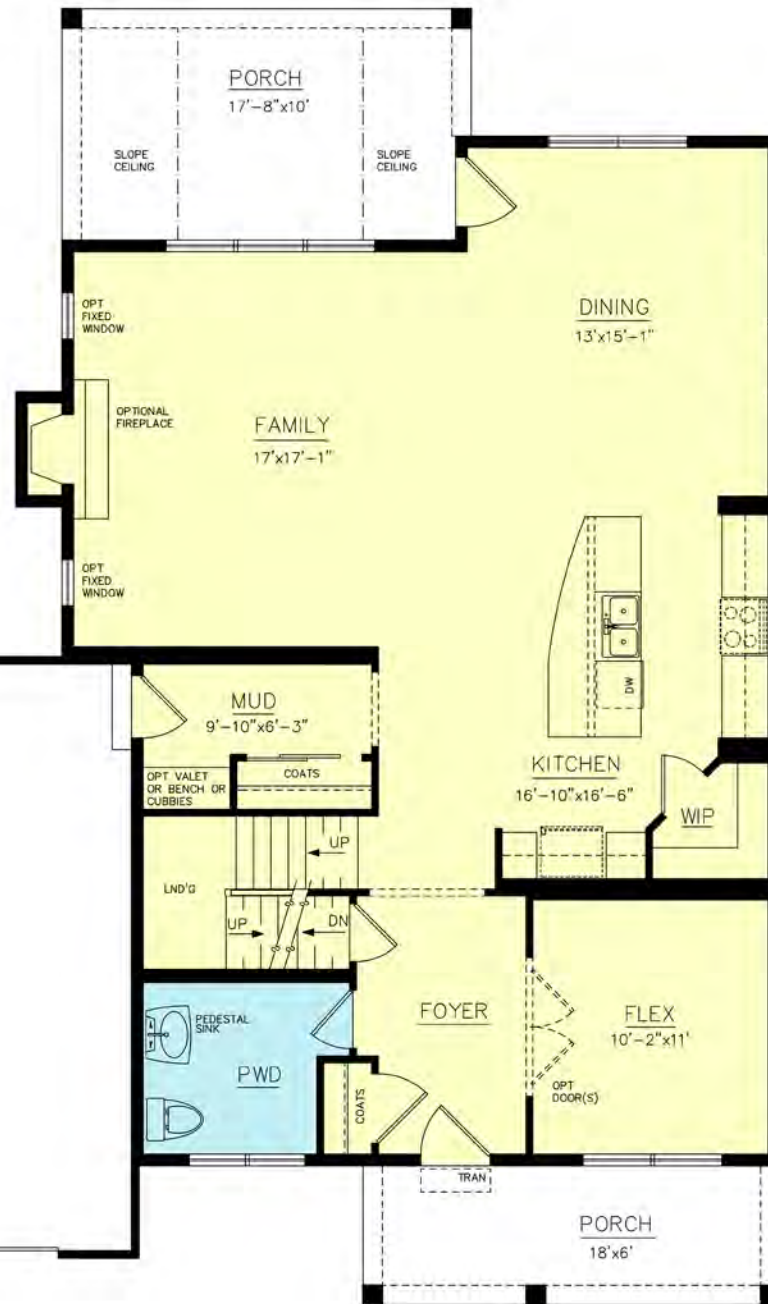




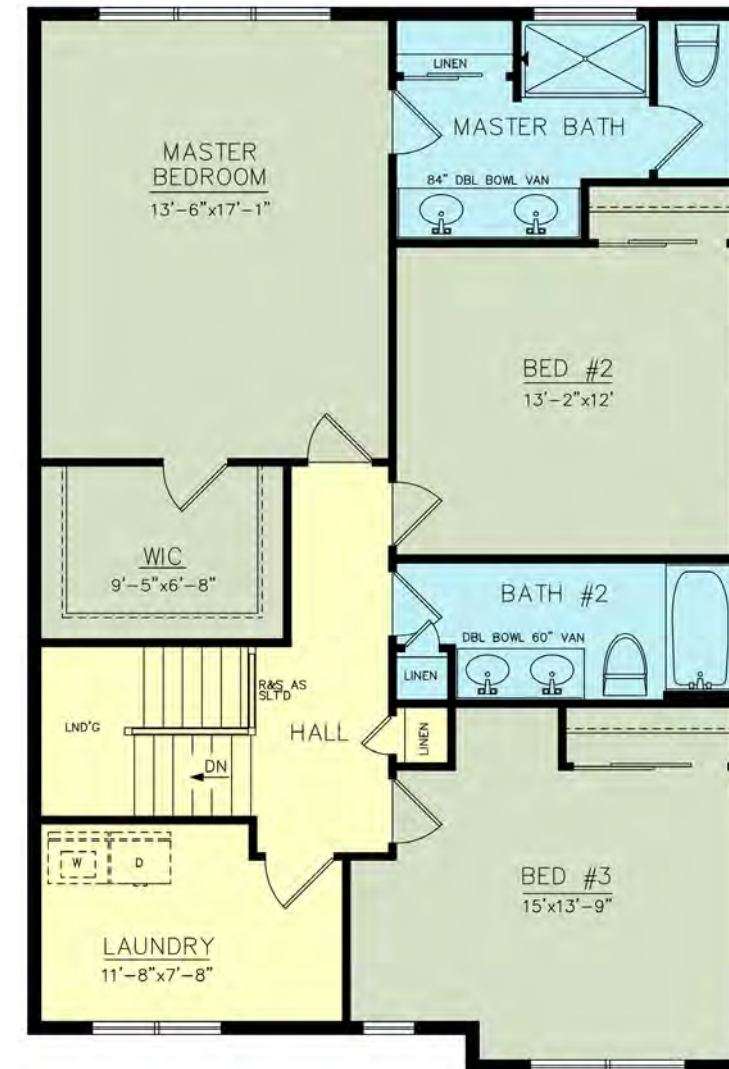
THE Briarwood



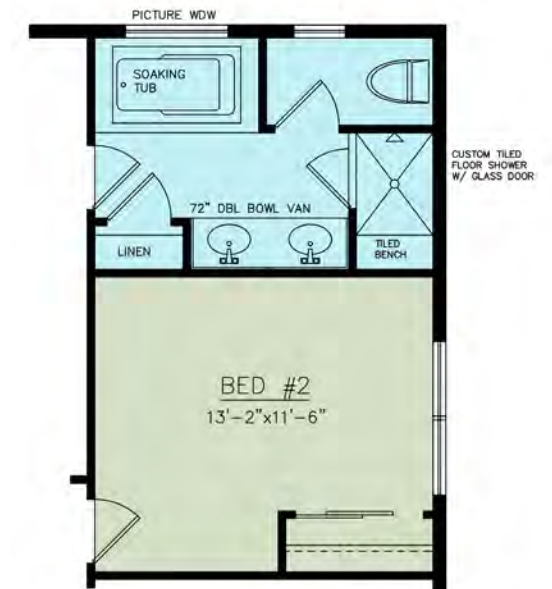
OPTIONAL FIRST FLOOR
BEDROOM & BATH



FIRST FLOOR PLAN
LIVING AREA = 1,238 SQ. FT.



SECOND FLOOR PLAN
LIVING AREA = 1,136 SQ. FT.



OPTIONAL
MASTER BATH