

THE HAWTHORNE BY RIEDMAN HOMES

Part of our new series of homes, the brand new Hawthorne Model features dozens of options that our homeowners have been asking for... larger garages, flexible rooms, and outdoor living spaces. The family room has plenty of space for relaxing or entertaining, while the adjacent kitchen and cafe are the picture of practicality. The kitchen features a large custom island, a walk-in pantry & butlers pantry, and even a pocket office!

The Hawthorne also has a separate dining room, a study, an oversized 3-car garage with additional storage, and a 2-story foyer. The second floor includes 3 spacious bedrooms, the laundry room, and loft space. The splendid master suite has an enormous walk-in closet as well as a private bath. This home also has covered front and back porches.

There is an option for a second master suite for guests or grandparents! Additional options include a flex room, 4th bedroom, and a 4-car garage.

**RIEDMAN
HOMES**

45 EAST AVENUE
ROCHESTER, NY 14604
585-232-1000

RIEDMANHOMES.COM



Illustrations are artist's concepts. Actual colors may vary. Builder reserves the right to modify floor plans, elevations, colors and materials without notice. ©2021 Riedman Homes. - ALL RIGHTS RESERVED. All dimensions and features are approximate and are subject to field variation and/or change without notice. If any discrepancy arises between these plans and the architect's plans, the architect's plans shall prevail.



TRADITIONAL ELEVATION

THE HAWTHORNE

OUTSTANDING FEATURES

- 1-story (Ranch)
- 2,952 Square Feet
- 4 Bedrooms
- 2.5 Baths
- Oversized 3-car Garage
- Pocket Office

FREQUENTLY REQUESTED OPTIONS

- Carriage-style Garage Door with Windows
- Custom Front Door and Side Lights
- Railings on Front Porch
- Guest / Grandparent Suite
- Flex Room



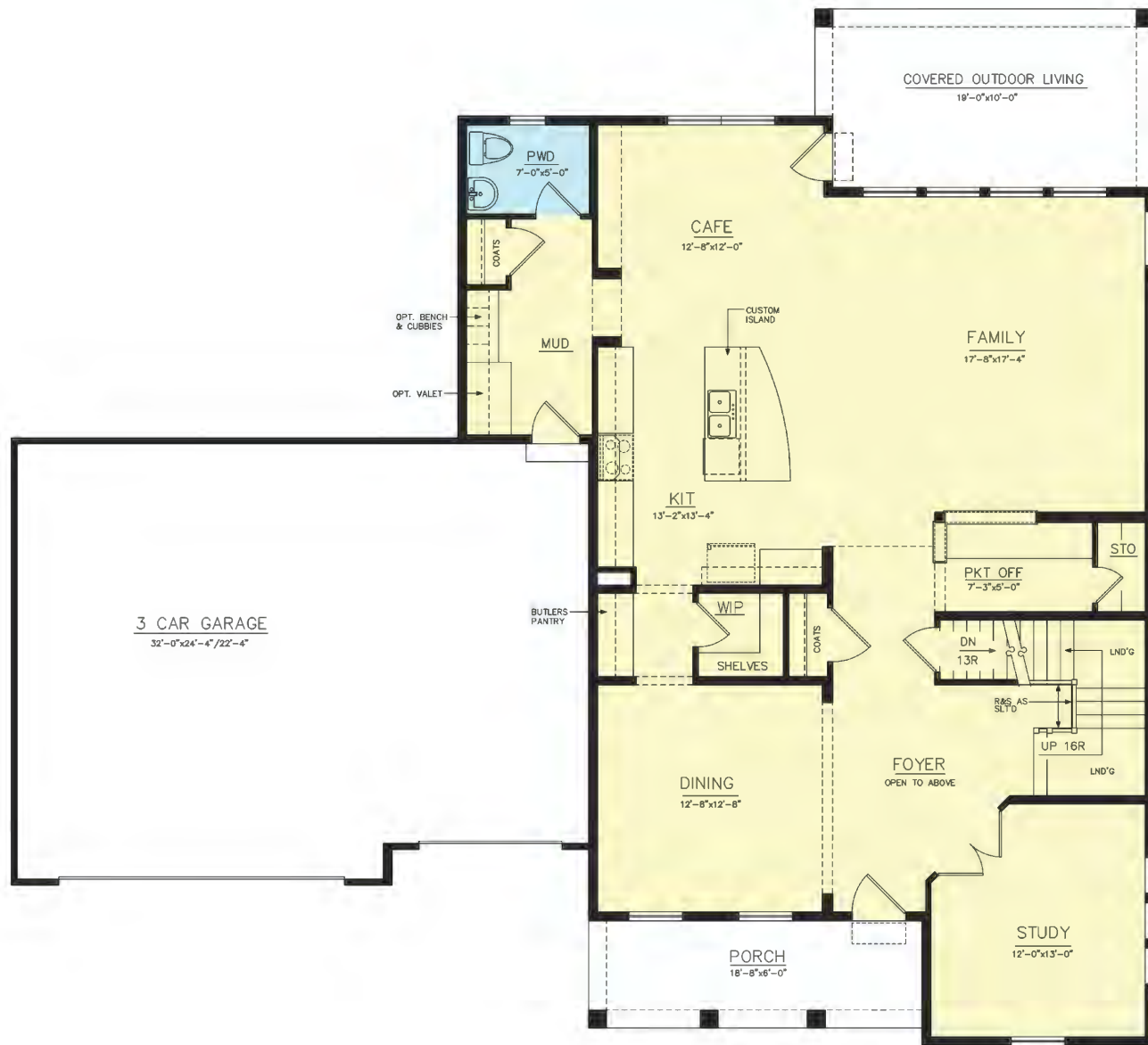
COTTAGE ELEVATION



CRAFTSMAN ELEVATION



THE HAWTHORNE



FIRST FLOOR PLAN
LIVING AREA = 1,578 SQ. FT.



SECOND FLOOR PLAN
LIVING AREA = 1,374 SQ. FT.