

**THE ROCKINGHAM BY RIEDMAN HOMES**

The Rockingham Model is spacious and open, reflecting the way you live today. Among the many new features that grace our new series of homes, this design includes a larger garage with additional storage, a pocket office, outdoor living space, and a flex room. The family room, kitchen and dining room are the hub of the home. The centrally located kitchen features a large custom island and a walk-in pantry! Along with 3 bedrooms and the laundry room, the second floor includes a private master suite with relaxing bath, and walk-in closet. This home also has a covered front porch, and a covered back porch. Additional options include a third bath and a fourth bedroom on the first floor.

**RIEDMAN  
HOMES**

45 EAST AVENUE

ROCHESTER, NY 14604

585-232-1000

**RIEDMANHOMES.COM**



Illustrations are artist's concepts. Actual colors may vary. Builder reserves the right to modify floor plans, elevations, colors and materials without notice. ©2021 Riedman Homes. – ALL RIGHTS RESERVED. All dimensions and features are approximate and are subject to field variation and/or change without notice. If any discrepancy arises between these plans and the architect's plans, the architect's plans shall prevail.



COTTAGE ELEVATION

*THE ROCKINGHAM*

**OUTSTANDING  
FEATURES**

- 2-story
- 2,239 Square Feet
- 3 Bedrooms
- 2.5 Baths
- Large Walk-in Pantry
- Flex Office

**FREQUENTLY REQUESTED  
OPTIONS**

- Carriage-style Garage Door with Windows
- Railings on Front Porch
- First Floor Bedroom
- Front Door and Side Lights



TRADITIONAL ELEVATION



CRAFTSMAN ELEVATION





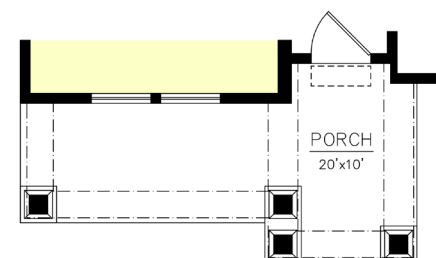
# THE *Rockingham*



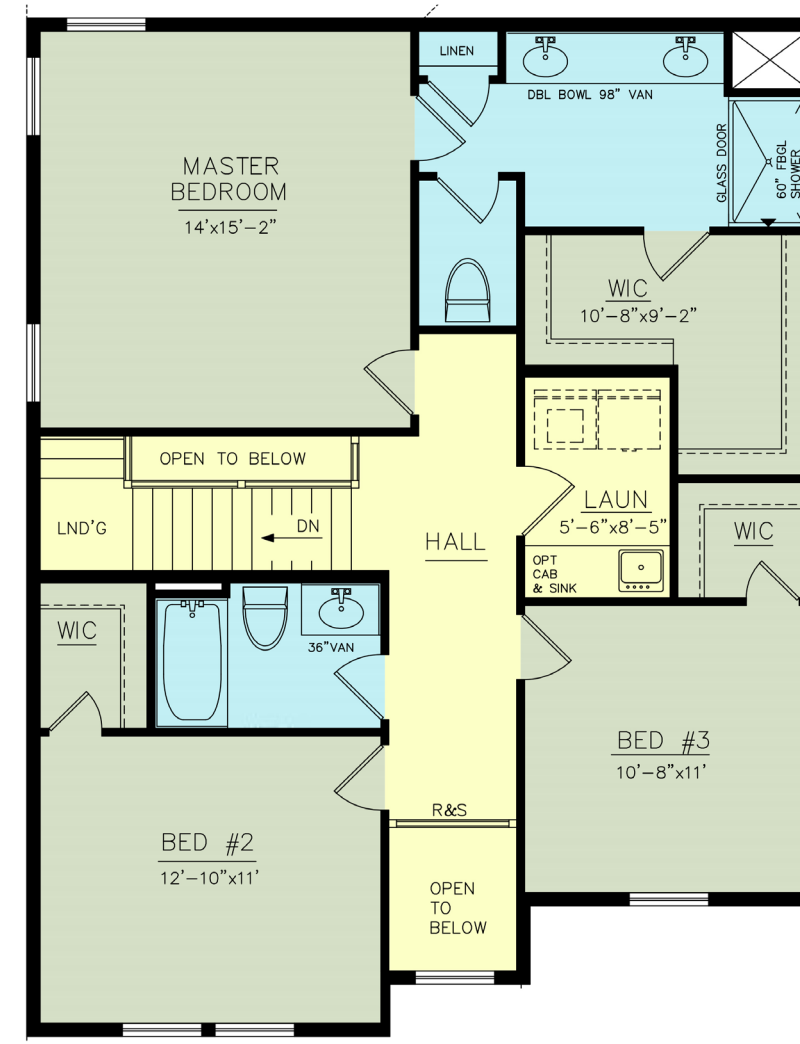
**FIRST FLOOR PLAN**  
LIVING AREA = 1,173 SQ. FT.  
9'-0" CEILING HEIGHT



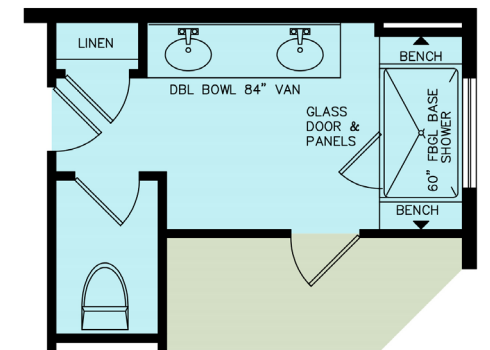
**OPTIONAL FIRST FLOOR  
BEDROOM 4 & BATH 3**



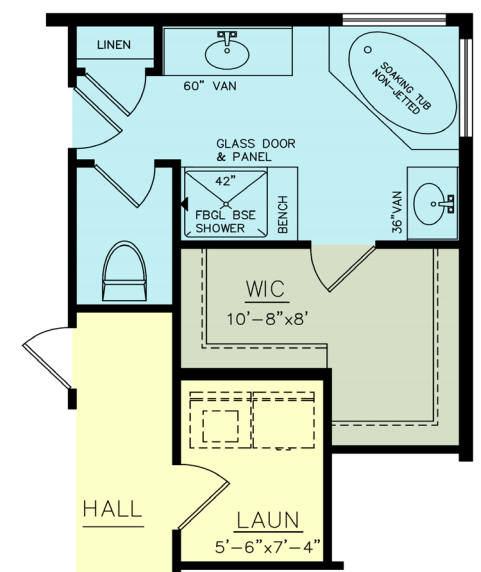
**CRAFTSMAN PORCH**



**SECOND FLOOR PLAN**  
LIVING AREA = 1,066 SQ. FT.



**OPTIONAL  
MASTER BATH 1**



**OPTIONAL  
MASTER BATH 2**